



Virtually Staged

Description

TWO BEDROOM SECOND FLOOR NEW BUILD FLAT IN CENTRAL WORHTING - MUST SEE

ROBERT LUFF & CO is Introducing an exclusive new development on Graham Road, in the heart of central Worthing, West Sussex — a beautifully crafted collection of contemporary one and two-bedroom luxury apartments, alongside a stunning penthouse residence.

Designed with modern living in mind, each home offers a perfect blend of style, comfort, and efficiency. The apartments feature fully integrated, high-specification kitchens with sleek cabinetry and premium appliances, ideal for both everyday living and entertaining. Bathrooms and shower rooms are finished to an exceptional standard, showcasing elegant fittings and contemporary design.

Throughout each property, you'll find brand-new flooring and plush carpets, creating a warm and inviting atmosphere. New double glazing enhances both energy efficiency and sound insulation, while a modern electric heating and water system ensures reliable and cost-effective performance year-round.

Thoughtfully designed LED lighting runs throughout, providing a clean, energy-efficient finish that complements the modern interiors.

Perfectly positioned in central Worthing, this development offers convenient access to local amenities, transport links, and the seafront — making it an ideal choice for professionals, downsizers, or those seeking a stylish coastal home.

This is a rare opportunity to secure a high-quality, newly built residence in one of West Sussex's most desirable locations.



robertluff.co.uk

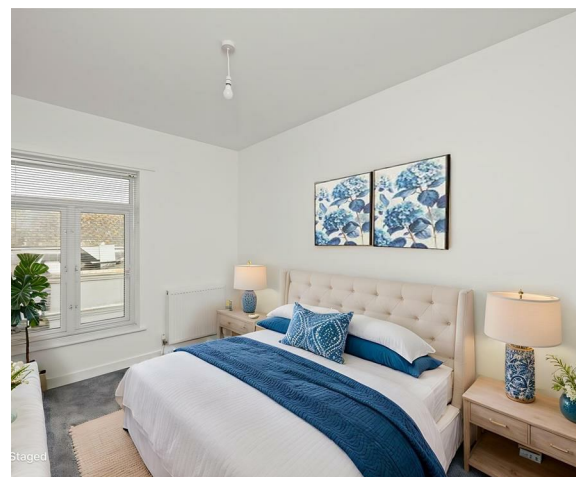
30 Guildbourne Centre, Worthing, West Sussex, BN11 1LZ | 01903 331247 | info@robertluff.co.uk

Robert
Luff & Co



Agents Note

Important Notice Regarding Photographs: Please note that the images used in this listing are staging photographs intended to illustrate the potential layout and presentation of the property. The actual rooms and finishes may vary from what is shown. Prospective tenants are encouraged to arrange a viewing to see the property in its current condition.





robertluff.co.uk

30 Guildbourne Centre, Worthing, West Sussex, BN11 1LZ | 01903 331247 | info@robertluff.co.uk

Robert
Luff & Co



robertluff.co.uk

30 Guildbourne Centre, Worthing, West Sussex, BN11 1LZ | 01903 331247 | info@robertluff.co.uk

Robert
Luff & Co



robertluff.co.uk

30 Guildbourne Centre, Worthing, West Sussex, BN11 1LZ | 01903 331247 | info@robertluff.co.uk

Robert
Luff & Co

